

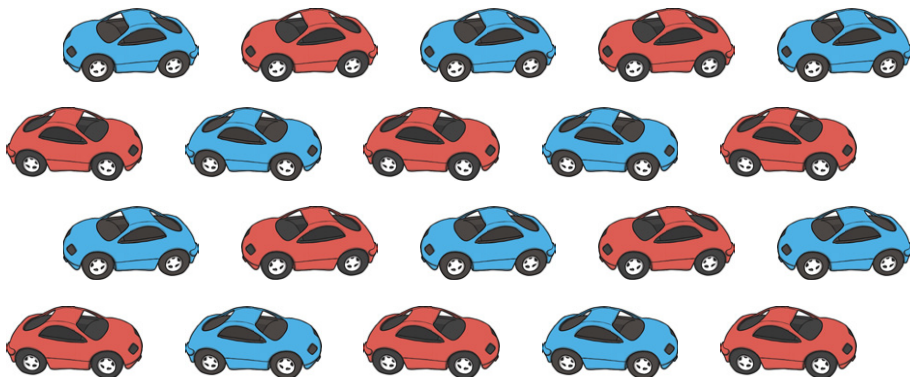
Fraction Word Problems

Challenge Cards

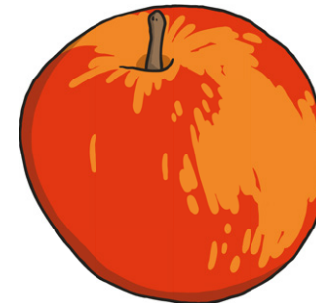
1. Fatima has 12 sweets. She shares her sweets and gives $\frac{1}{2}$ to her friend. How many sweets do they have each?



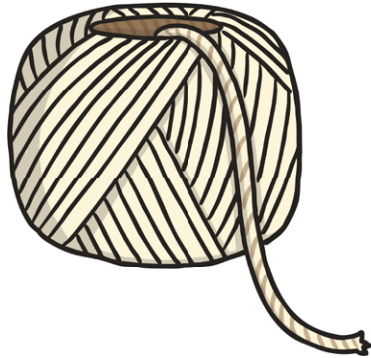
2. There are 20 cars in the car park. Half of them are red and the rest are blue. How many are blue?



3. Chen and his friend have 8 apples each after they shared them equally. How many apples did they start with?



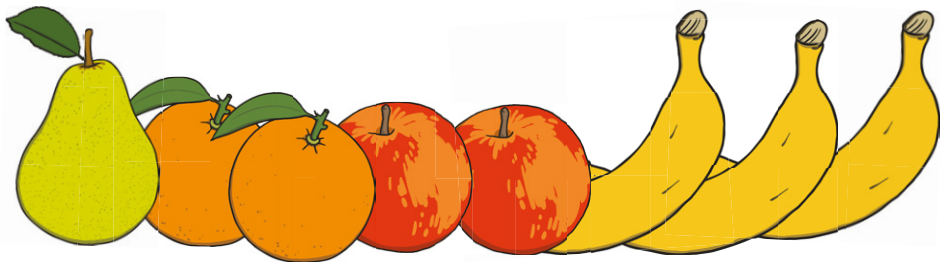
4. Stephanie has a piece of string that is 14cm long. She wants to cut it in half. How long will each piece be?



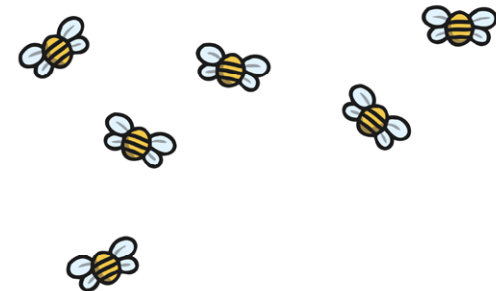
5. There are 10 cats on a wall. Half of them are male. How many are female?



6. There are 8 fruits in the bowl. $\frac{1}{4}$ of them are apples. How many apples are there?



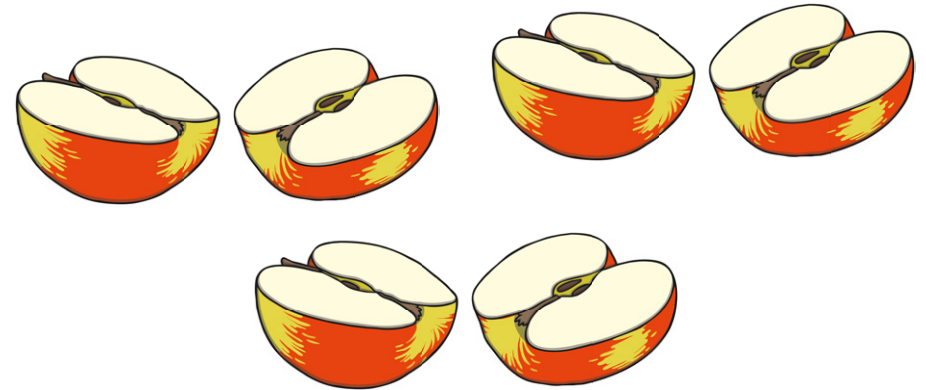
7. There are 20 flowers in the garden. $\frac{1}{4}$ of them have a bee on them. How many flowers are covered in bees?



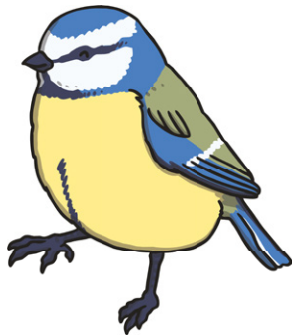
8. David and his friends shared some biscuits between the four of them. They have 3 each. How many biscuits did they start with?



9. Gwen has 6 apple halves. How many whole apples does she have?



10. There are 24 animals in the zoo. $\frac{1}{4}$ of them have feathers. How many of the animals have feathers?



Answers

- | | |
|------------------|-----------------------------|
| 1. 6 sweets each | 6. 2 apples |
| 2. 10 blue cars | 7. 5 flowers |
| 3. 16 apples | 8. 12 biscuits |
| 4. 7cm long | 9. 3 apples |
| 5. 5 female cats | 10. 6 animals have feathers |